







# Ballyweeaun Townland, Co. Galway

-  English
-  Gaeilge (/ga/galway/ross/ross/cloonbur/ballyweeaun/)
-  Deutsch (/de/galway/ross/ross/cloonbur/ballyweeaun/)
-  français (/fr/galway/ross/ross/cloonbur/ballyweeaun/)



(/)

Co. Galway (/galway/) → Ross (/mayo/ross2/) → Ross Civil Parish (/mayo/ross1/) → Cloonbur Electoral Division (/galway/cloonbur/) → Ballyweeaun (/galway/ross/ross/cloonbur/ballyweeaun/)

- [Map](#) ↓
- [Area](#) ↓
- [Bordering Townlands](#) ↓
- [Subtownlands](#) ↓
- [Records Search](#) ↓
- [OpenStreetMap](#) ↓

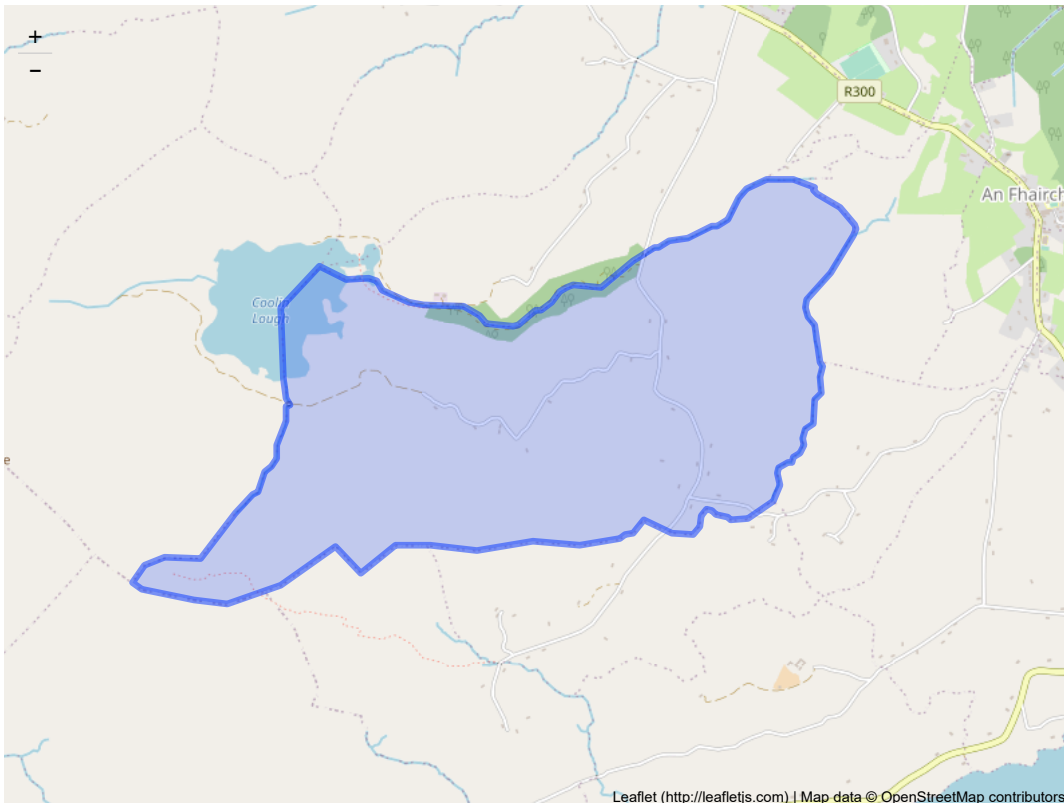
Ballyweeaun is in the Electoral Division of Cloonbur (/galway/cloonbur/), in Civil Parish of Ross (/mayo/ross1/), in the Barony of Ross (/mayo/ross2/), in the County of Galway (/galway/)

The Irish name for Ballyweeaun is Baile Uí Bhuáin

Ballyweeaun is not matched up to Logainm.ie yet.

## Map

It is located at 53° 32' 13" N, 9° 23' 48" W.



## Area

Ballyweeaun has an area of:

- 2,800,927 m<sup>2</sup> / 280.09 hectares / 2.8009 km<sup>2</sup>
- 1.08 square miles
- 692.12 acres / 692 acres, 0 roods, 19 perches

Nationwide, it is the 6203rd largest townland that we know about

Within Co. Galway, it is the 456th largest townland

## Borders

Ballyweeaun borders the following other townlands:

- An Cheathrú Chaol ([/galway/ross/cong/cloonbur/an-cheathru-chaol/](#)) to the east
- An Fhaiche ([/galway/ross/ross/cloonbur/an-fhaiche/](#)) to the east
- Ballard ([/galway/ross/cong/cloonbur/ballard/](#)) to the west
- Cahergal ([/galway/ross/ross/cloonbur/cahergal/](#)) to the west
- Carrick East ([/galway/ross/cong/carrick-east/](#)) to the west
- Coolin ([/galway/ross/ross/cloonbur/coolin/](#)) to the west
- Gortnarup ([/galway/ross/cong/cloonbur/gortnarup/](#)) to the south
- Kilbeg Upper ([/galway/ross/ross/cloonbur/kilbeg-upper/](#)) to the north
- Millpark ([/galway/ross/ross/cloonbur/millpark/](#)) to the east

## Subtownlands

We don't know about any subtownlands in Ballyweeaun.

## Genealogy / Ancestry / Records Search

Curious to see who lived in Ballyweeaun in the past? Maybe even seeing scans of their handwritten census returns?

- Search the 1911 Irish Census for Ballyweeaun ([http://www.census.nationalarchives.ie/search/results.jsp?census\\_year=1911&county19011911=Galway&townland=Ballyweeaun&ded=Cloonbur&search=Search](http://www.census.nationalarchives.ie/search/results.jsp?census_year=1911&county19011911=Galway&townland=Ballyweeaun&ded=Cloonbur&search=Search))
- Search the 1901 Irish Census for Ballyweeaun ([http://www.census.nationalarchives.ie/search/results.jsp?census\\_year=1901&county19011911=Galway&townland=Ballyweeaun&ded=Cloonbur&search=Search](http://www.census.nationalarchives.ie/search/results.jsp?census_year=1901&county19011911=Galway&townland=Ballyweeaun&ded=Cloonbur&search=Search))
- Search Griffith's Valuation (1847-1864) for Ballyweeaun (<http://www.askaboutireland.ie/griffith-valuation/index.xml?action=doPlaceSearch&Submit.x=51&Submit.y=16&Submit=Submit&freetext=Ballyweeaun&countyname=Galway&baronname=Ross&unionname=&parishname=R>)

## OpenStreetMap

Ballyweeaun was added to OpenStreetMap on 27 Feb 2014 by Boggedy.

### View

[View on OpenStreetMap.org \(https://www.openstreetmap.org/relation/3540587\)](https://www.openstreetmap.org/relation/3540587)

[Show Changes \(https://pewu.github.io/osm-history/#!/relation/3540587\)](https://pewu.github.io/osm-history/#!/relation/3540587)

### Edit

[JOSM \(http://localhost:8111/import?url=http://api.openstreetmap.org/api/0.6/relation/3540587/full\)](http://localhost:8111/import?url=http://api.openstreetmap.org/api/0.6/relation/3540587/full)

[iD \(https://www.openstreetmap.org/edit?editor=id&relation=3540587\)](https://www.openstreetmap.org/edit?editor=id&relation=3540587)

[Potlatch \(https://www.openstreetmap.org/edit?editor=potlatch2&relation=3540587\)](https://www.openstreetmap.org/edit?editor=potlatch2&relation=3540587)

[Level0 \(http://level0.osmz.ru/?url=relation/3540587\)](http://level0.osmz.ru/?url=relation/3540587)

The attribution for this townland is <http://places.galwaylibrary.ie/asp/fullresult.asp?id=54832>.

© Copyright ([/page/copyright/](#)) | ⚙ Download Data ([/page/download/](#)) | How up-to-date is Townlands.ie? ([/page/data\\_freshness/](#)) | Who's mapping townlands? ([/mappers/](#)) | Townland mapping activity ([/progress/activity/](#)) | 📖 Townland Index ([/index/](#)) | Help add Logainm data to OSM ([/static/logainm/](#)) | Maps ([/page/maps/](#)) | Last update: April 24, 2022, 8:30 a.m.